

Buttwil LSZU airfield contest 25.07.2015

Alternative date in case of bad weather condition 08.08.2015

Airfield contact:

Buttwil Airport AG
CH-5632 Buttwil
+41 56 675 50 50

www.flugschule-eichenberger.ch

Tbd, Airfield Chief

Contest Director:

Helen Stauffiger

Chief Judge

Sophie Martel

Registration deadline:

11.07.2015

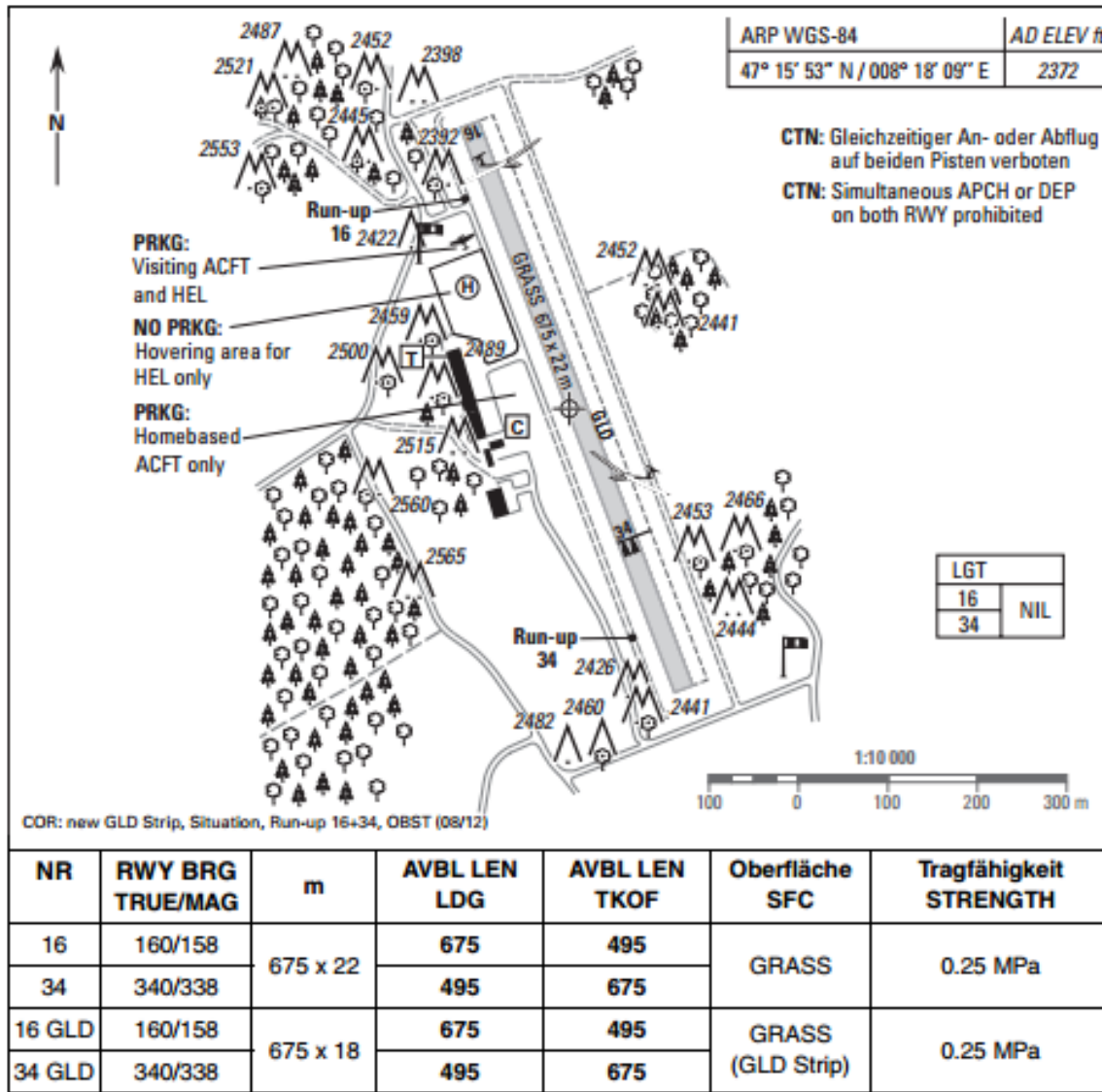
Briefing:

0900 lt

Programme and Sequences

An unknown sequence will be flown. Publication is 24h in advance

Airfield information – Runway, Elevation Radio, coordinates, location



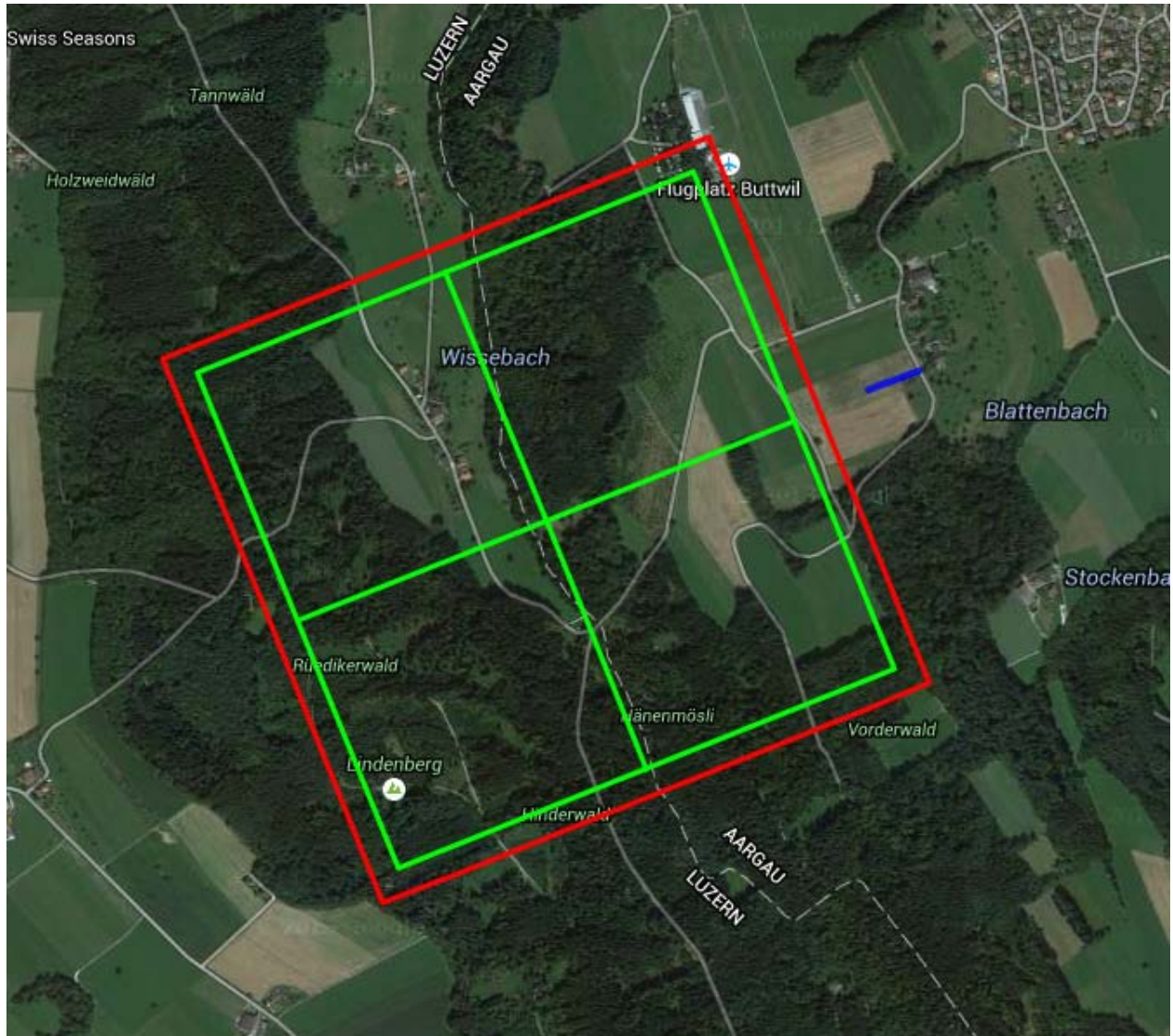
Fuel

Avgas 100ll

Operations

- Use AFIS Freq 122.15 for blind transmissions
- Strictly adhere to the published procedure on the VAC
- Be aware of the noise sensitive areas in the vicinity
- Any aerobatic flight outside the contest is prohibited
- Preferential RWY in use 34 (RWY 16 in foehn conditions only)

Competition Box



Box Frequency 122.65

Box Coordinates

Location	Lat	Long
Back Left	047°15'08.84"N	008°17'36.8"E
Back Center	047°15'23.85"N	008°17'27.87"E
Back Right	047°15'38.85"N	008°17'18.93"E
Center Left	047°15'14.9"N	008°17'58.91"E
Center Box	047°15'29.91"N	008°17'49.98"E
Center Right	047°15'44.92"N	008°17'41.04"E
Front Left	047°15'20.96"N	008°18'21.03"E
Front Center	047°15'35.97"N	008°18'12.1"E
Front Right	047°15'50.98"N	008°18'03.16"E

Bounary Coordinates

Location	Lat	Long
Back Left	047°15'39.75"N	008°17'15.83"E
Back Right	047°15'06.73"N	008°17'35.48"E
Front Left	047°15'53.09"N	008°18'04.48"E
Front Right	047°15'20.07"N	008°18'24.14"E
X Axis Heading	Form B	Form C
	338	158

Judges can be positioned anywhere along the blue line which runs

From	047°15'37.79"N	008°18'18.73"E
To	047°15'39.01"N	008°18'23.15"E

Close-in obstacles

Familiarize yourself with the terrain and close-in obstacles surrounding the airfield. Detailed information regarding the obstacles can be found on <http://map.aviation.admin.ch/>

