

## Buttwil LSZU airfield contest 25.07.2015

Alternative date in case of bad weather condition 08.08.2015

### **Airfield contact:**

**Buttwil Airport AG**  
CH-5632 Buttwil  
+41 56 675 50 50

[www.flugschule-eichenberger.ch](http://www.flugschule-eichenberger.ch)

Tbd, Airfield Chief

### **Contest Director:**

Helen Stauffiger

### **Chief Judge**

Sophie Martel

### **Registration deadline:**

11.07.2015

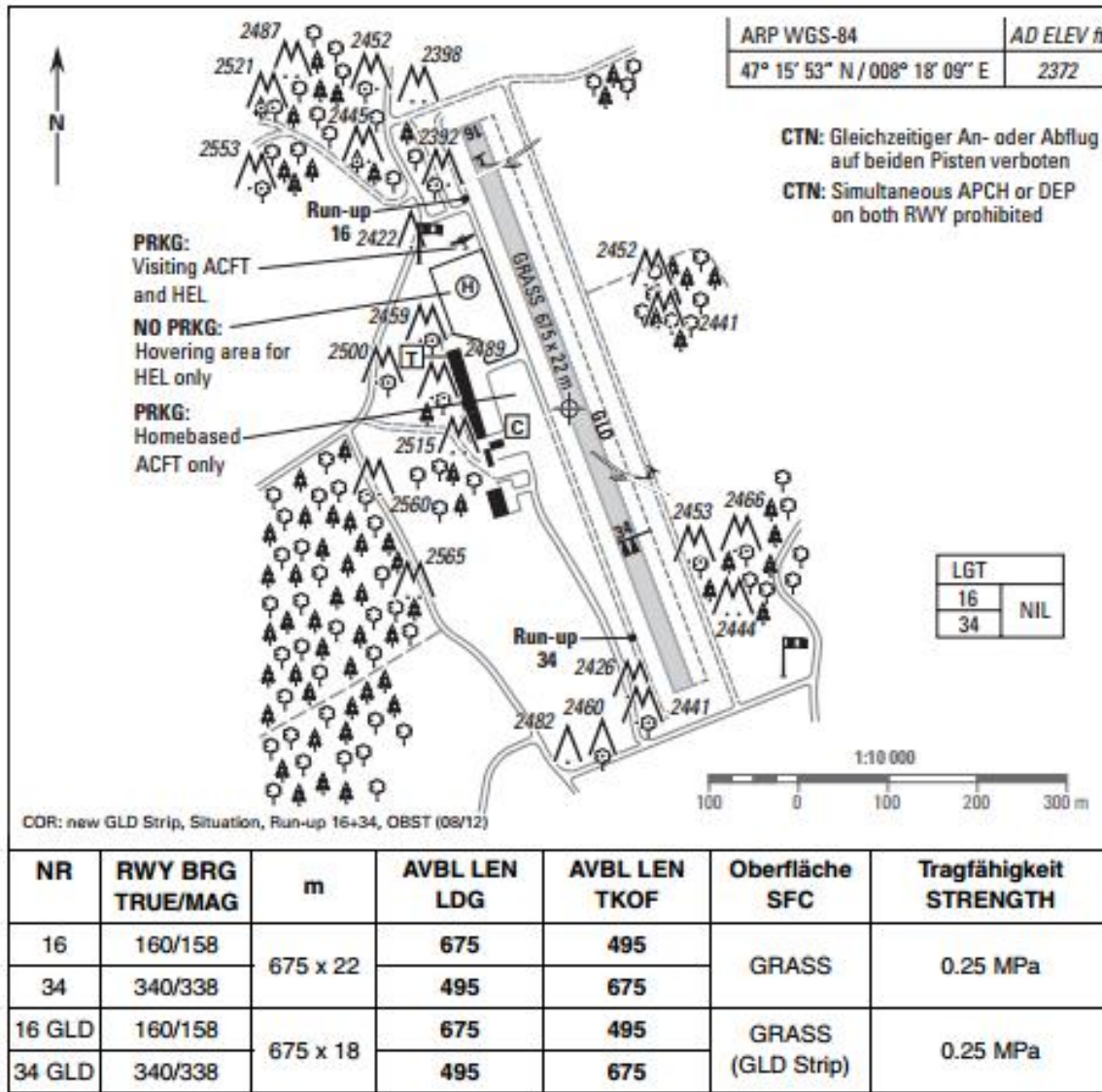
### **Briefing:**

0900 lt

### **Programme and Sequences**

An unknown sequence will be flown. Publication is 24h in advance

**Airfield information – Runway, Elevation Radio, coordinates, location**



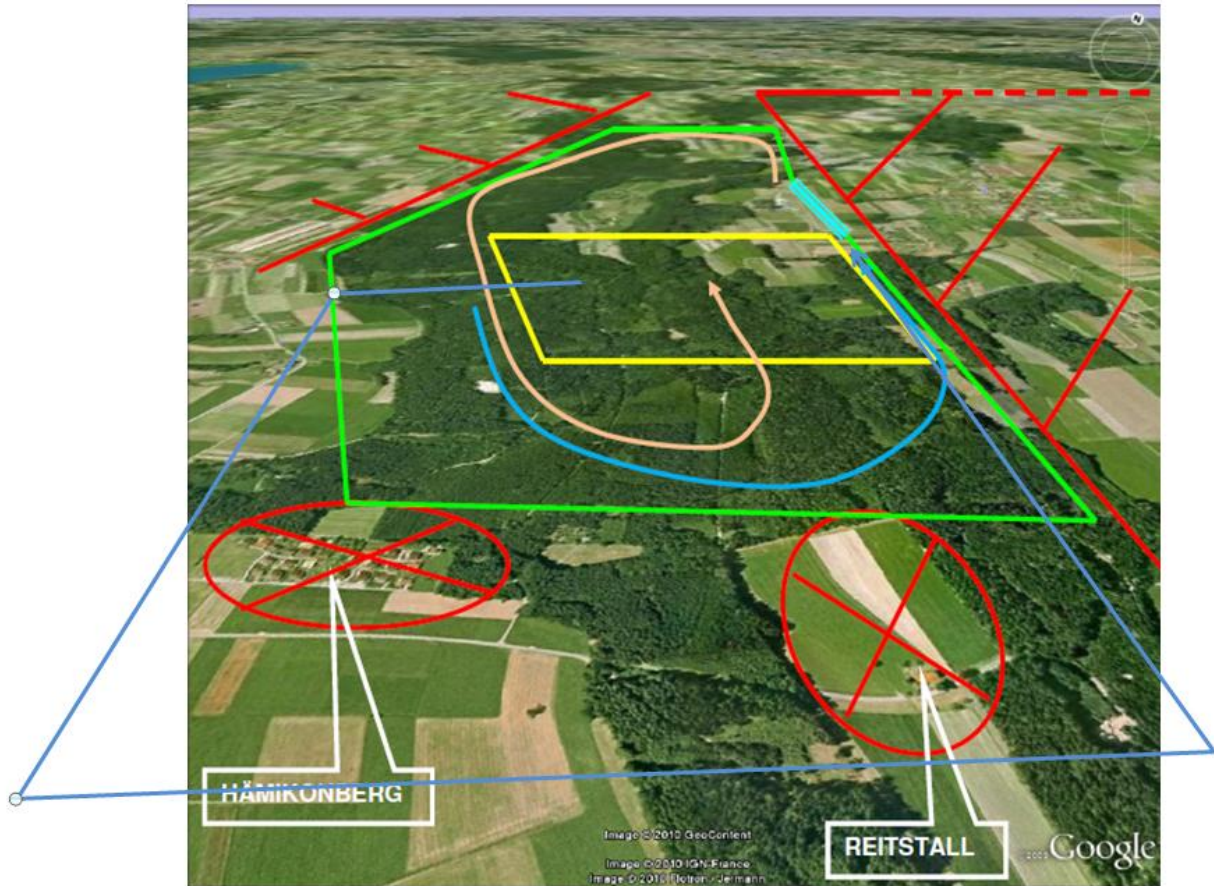
**Fuel**

Avgas 100II

**Operations**

- Use AFIS Freq 122.15 for blind transmissions
- Strictly adhere to the published procedure on the VAC
- Be aware of the noise sensitive areas in the vicinity
- Any aerobatic flight outside the contest is prohibited
- Preferential RWY in use 34 (RWY 16 in foehn conditions only)

## Competition Box



### Box Frequency 122.65

Yellow:	Box
Orange:	Box-Entry
Green:	Flying Zone (T/O, Climb, Box, Descent, Approach)
Light blue:	Runway
Blue:	inner blue line: preferred Approach outer blue line: Official approach

### Box Limits:

Sportsmen/Intermediate:	min 500m AGL / 4'000ft QHN max 1'500m AGL / 7'300ft QNH
Advanced:	min 200m AGL / 3'000ft QHN max 1'100m AGL / 6'000ft QNH
Unlimited:	min 100m AGL / 2'700ft QHN max 1'000m AGL / 5'700 QNH

### Close-in obstacles

Familiarize yourself with the terrain and close-in obstacles surrounding the airfield. Detailed information regarding the obstacles can be found on <http://map.aviation.admin.ch/>

