

Neuchatel LSGN airfield contest 04.07.2015

Alternative date in case of bad weather condition 18.07.2015

Airfield contact:

Aéroport de Neuchâtel SA
Aérodrome
CH-2013 Colombier (NE)
+41 32 841 31 55

www.neuchatel-airport.ch

Arsene Gigon, Airfield Chief

Contest Director:

Tobias Hossmann

Chief Judge

Sophie Martel

Registration deadline:

The registration is closed

Briefing:

0930 lt

Programme and Sequences

A unknown sequence will be flown. Publication is 15h in advance

Programme:

| | | | | | | |
|------------------|------------------|------------------|------------------|------------------|------------------|--------------|
| 0900-0930 | 0930-0945 | 1015-1200 | 1200-1330 | 1330-1530 | 1600-1615 | 1615- |
| Fly-In | Briefing | Competition | Lunch | Competition | Debriefing | Fly-Out |

Fuel

Avgas 100ll

Operations

- Use AFIS Freq 123.60 for blind transmissions
- Strictly adhere to the published procedure on the VAC
- Do not overfly the city of Neuchatel
- Any aerobatic flight outside the contest is prohibited

- The AD will be closed during the competition hours
- PPR for non-based aircraft (expect the participants)

Landing fee:

CHF 17.-/landing. The landing fee for the movements will be collected in cash from each pilot after the briefing. Please make sure you will bring an accurate amount of cash (34.- / 2

Landings) along as there won't be a possibility to change money.

Competition Box



Box Frequency 122.65

Box Coordinates

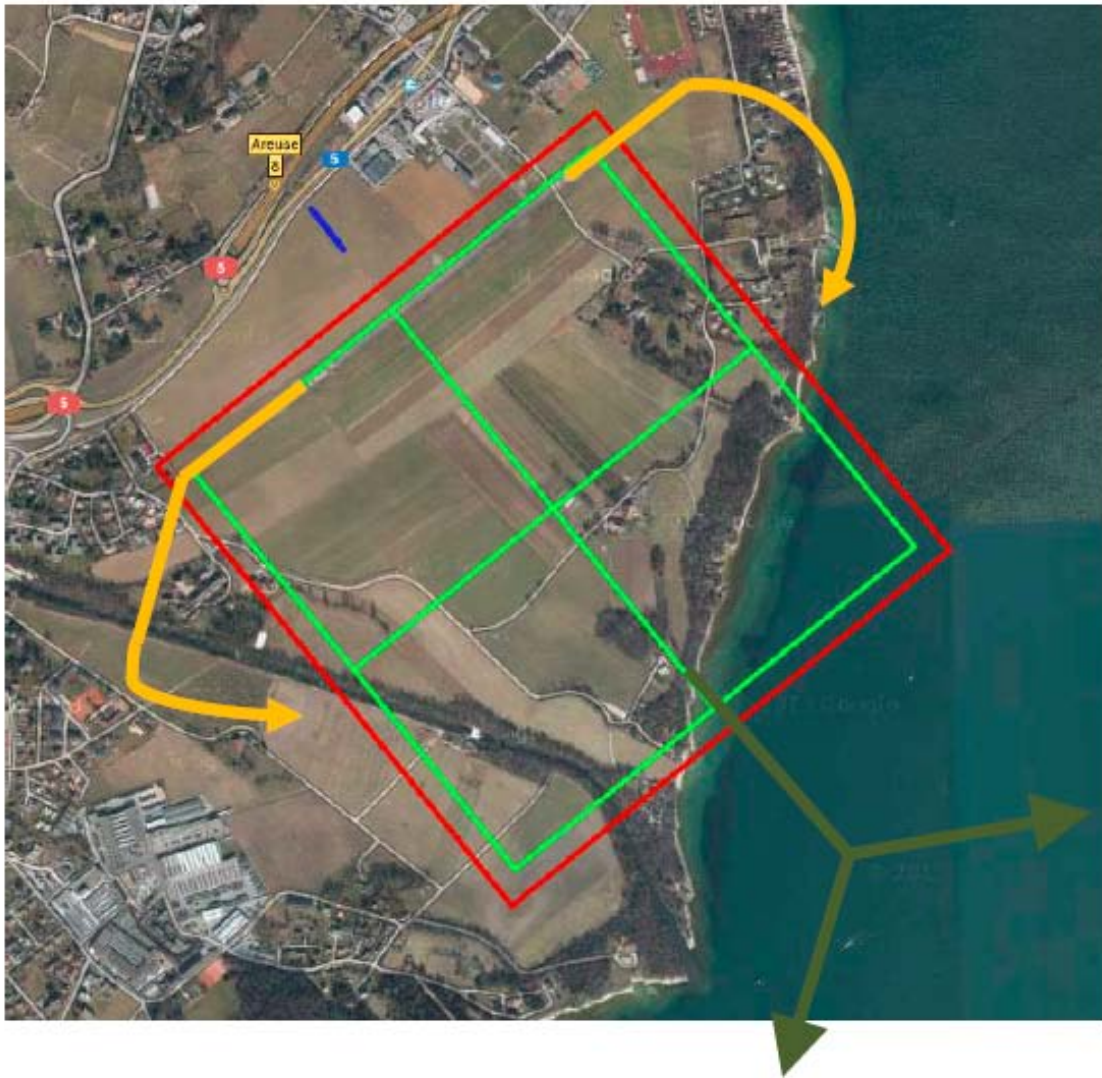
| Location | Lat | Long |
|--------------|----------------|----------------|
| Back Left | 046°57'09.69"N | 006°52'36.4"E |
| Back Center | 046°56'59.5"N | 006°52'17.97"E |
| Back Right | 046°56'49.31"N | 006°51'59.54"E |
| Center Left | 046°57'22.27"N | 006°52'21.48"E |
| Center Box | 046°57'12.08"N | 006°52'03.05"E |
| Center Right | 046°57'01.89"N | 006°51'44.62"E |
| Front Left | 046°57'34.85"N | 006°52'06.56"E |
| Front Center | 046°57'24.66"N | 006°51'48.12"E |
| Front Right | 046°57'14.47"N | 006°51'29.69"E |

Bounary Coordinates

| Location | Lat | Long |
|-----------------------|----------------|----------------|
| Back Left | 046°56'47.03"N | 006°51'59.19"E |
| Back Right | 046°57'09.45"N | 006°52'39.74"E |
| Front Left | 046°57'14.71"N | 006°51'26.36"E |
| Front Right | 046°57'37.12"N | 006°52'06.91"E |
| X Axis Heading | Form B | Form C |
| | 231 | 51 |

Judges can be positioned anywhere along the blue line which runs

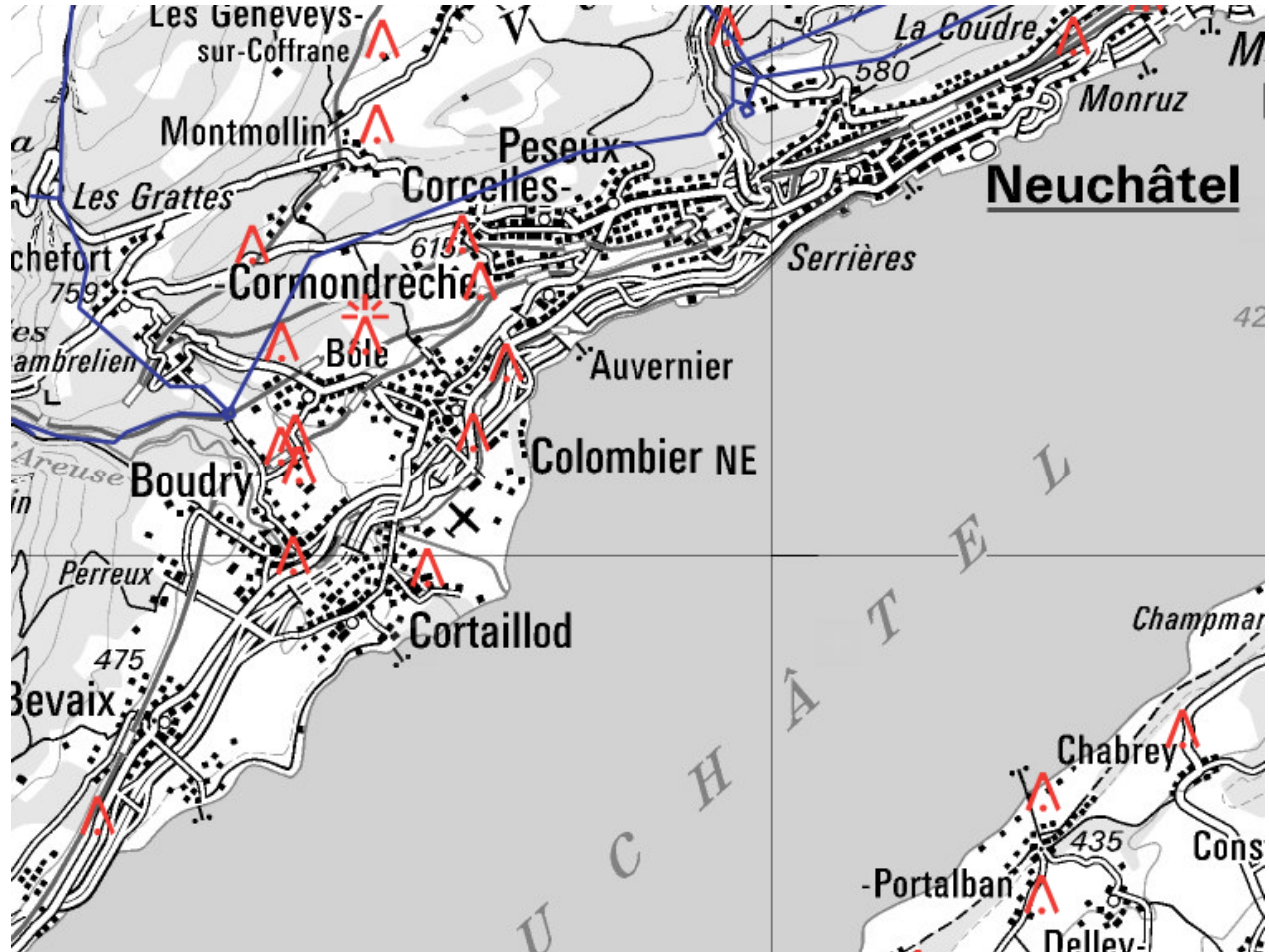
| | | |
|------|----------------|----------------|
| From | 046°57'28.43"N | 006°51'43.65"E |
| To | 046°57'30.95"N | 006°51'40.66"E |



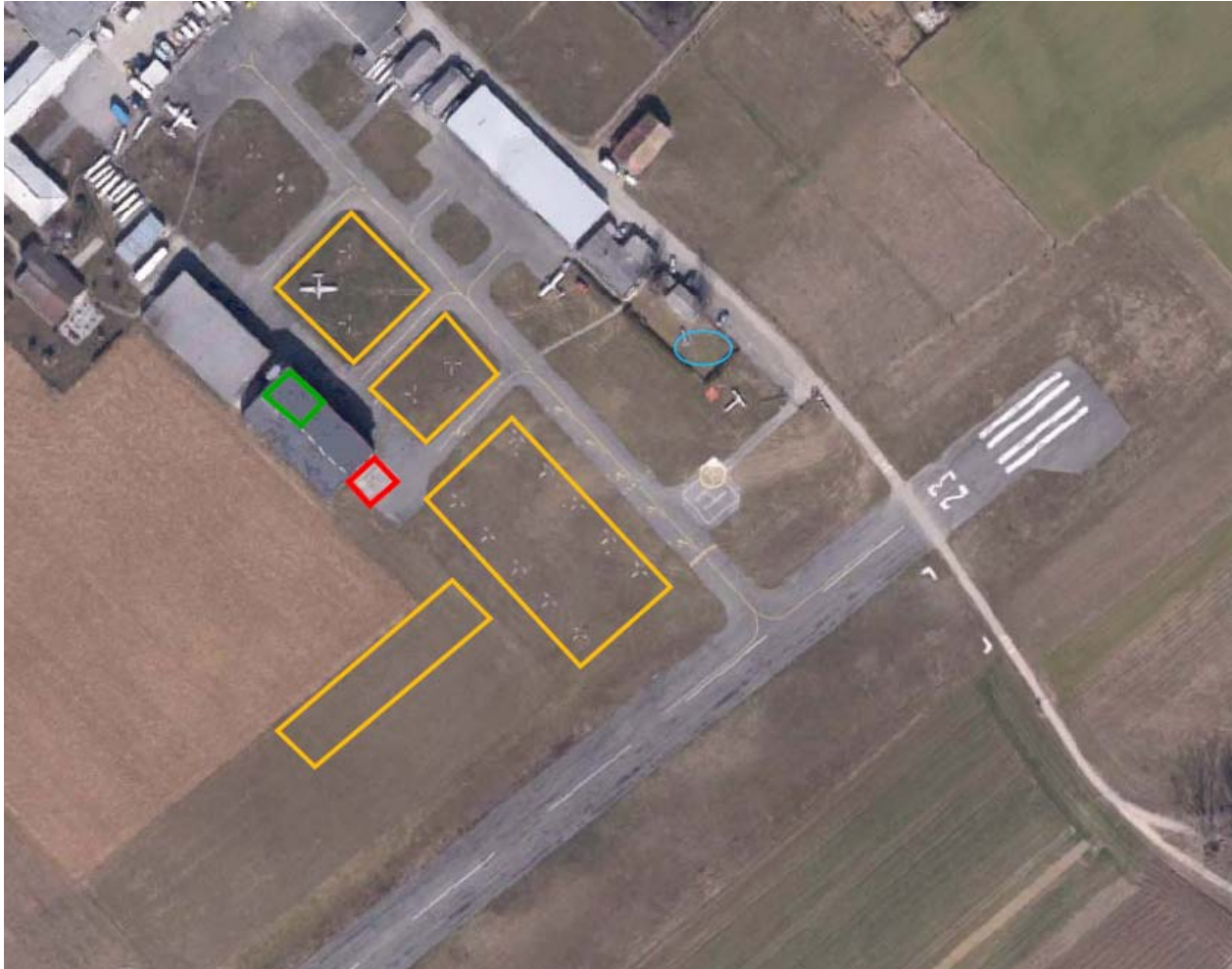
-  Way In
-  Way Out

Close-in obstacles

Familiarize yourself with the terrain and close-in obstacles surrounding the airfield. Detailed information regarding the obstacles can be found on <http://map.aviation.admin.ch/>



Plan overview



- ◆ Fuel station
- ◆ Briefingroom 1. Floor. Use staircase on the north side of the Air-Espace hangar.
- ◆ Parking zone
- ◆ Public area / catering