

Bressaucourt LSZQ airfield contest 02.05.2015

Alternative date in case of bad weather condition 09.05.2015

Airfield contact:

SCAJ
Aerodrome regional
CH-2904 Bressaucourt
+41 32 466 60 73

www.aerajura.ch

Sebastian Theurillat, Airfield Chief

Contest Director:

tbd

Chief Judge

Sophie Martel

Registration deadline:

18.04.2015

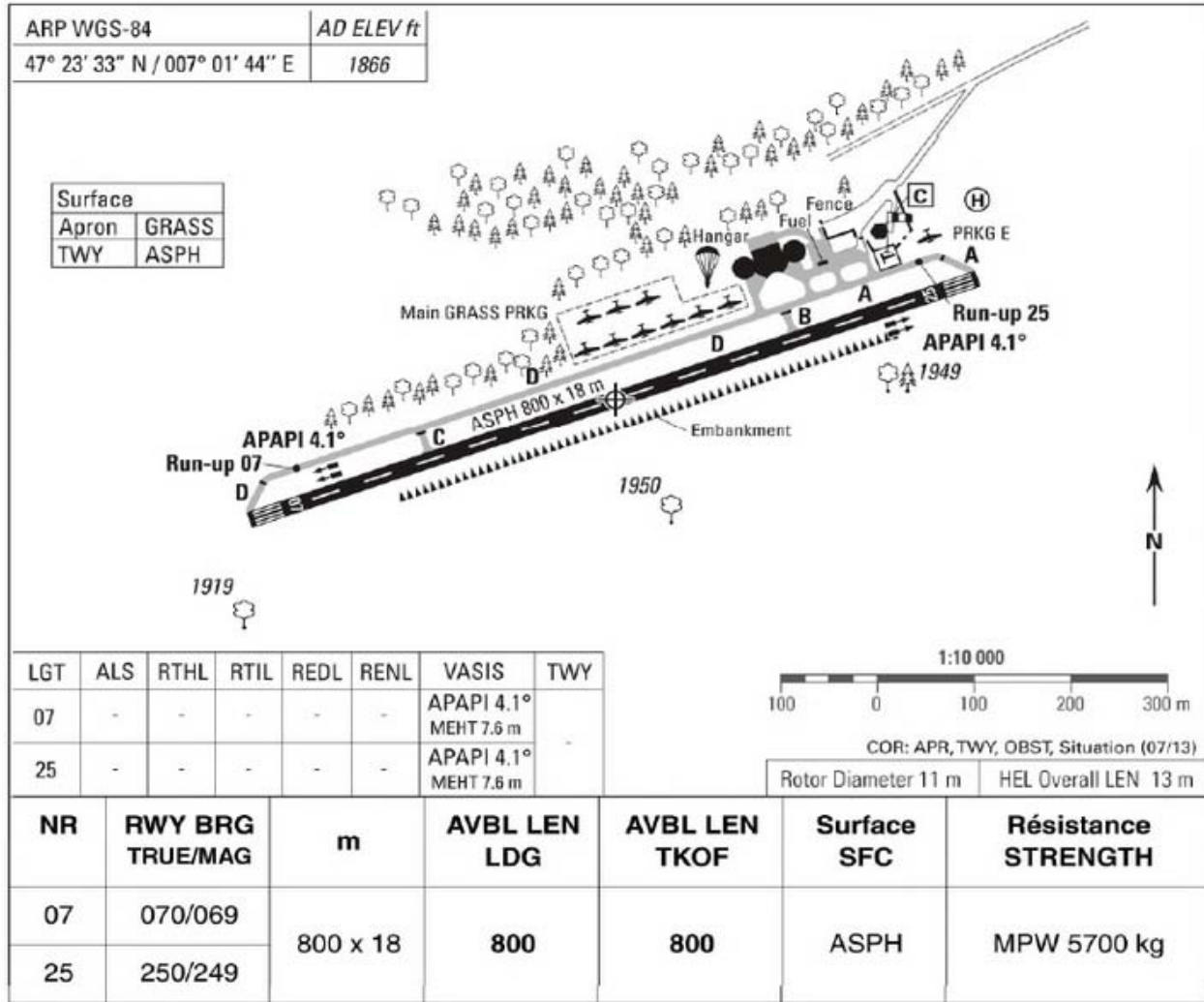
Briefing:

09:00 local

Programme and Sequences

The 2015 known sequence will be flown

Airfield information – Runway, Elevation Radio, coordinates, location



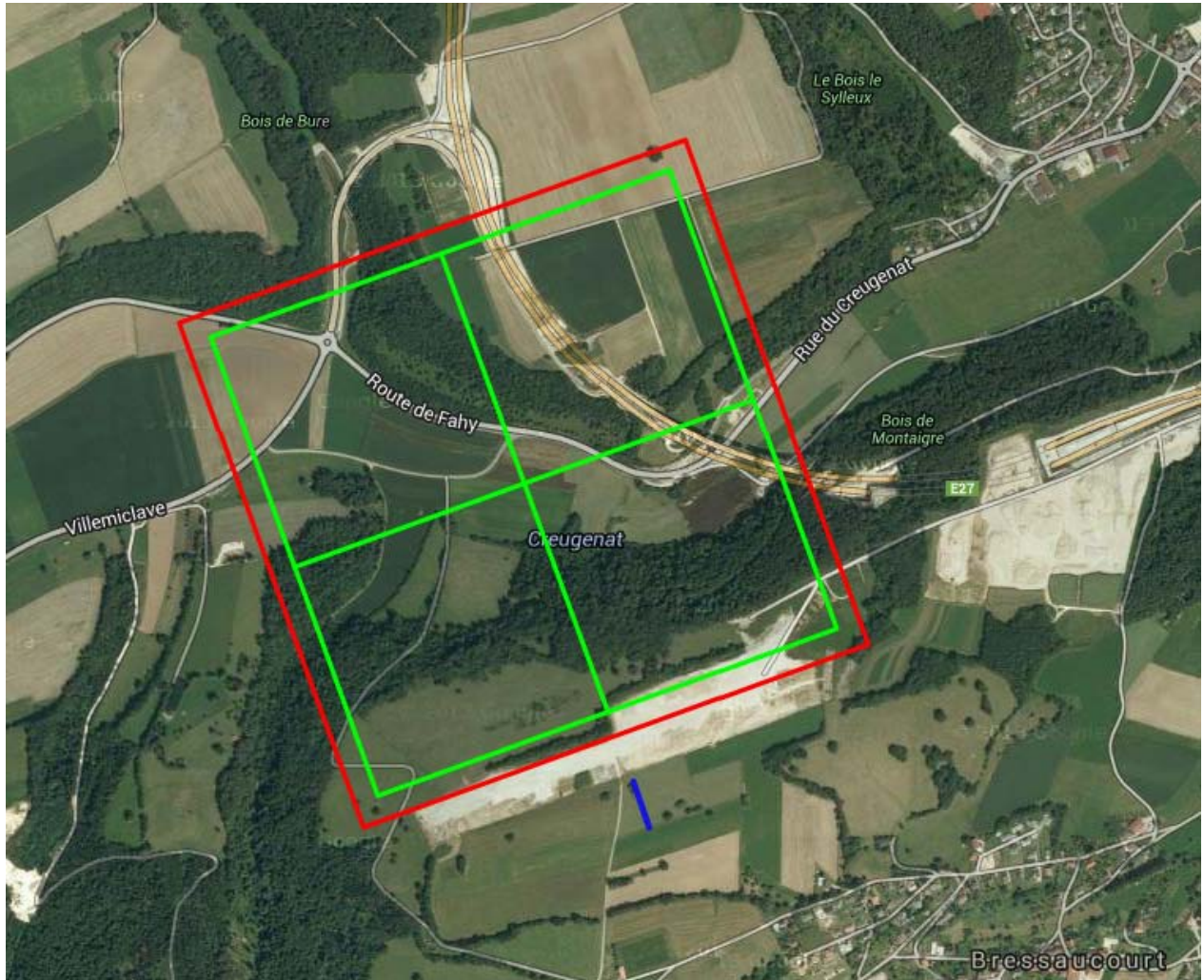
Fuel

Avgas 100II

Operations

- Use AFIS Freq 122.05 for blind transmissions
- Strictly adhere to the published procedure on the VAC
- Be aware of the TMA Bale
- Any aerobatic flight outside the contest is prohibited

Competition Box



Box Coordinates

Location	Lat	Long
Back Left	047°24'00.3"N	007°01'02.65"E
Back Center	047°24'05.84"N	007°01'25.12"E
Back Right	047°24'11.38"N	007°01'47.6"E
Center Left	047°23'45.09"N	007°01'10.83"E
Center Box	047°23'50.63"N	007°01'33.3"E
Center Right	047°23'56.16"N	007°01'55.77"E
Front Left	047°23'29.88"N	007°01'19.01"E
Front Center	047°23'35.42"N	007°01'41.48"E
Front Right	047°23'40.95"N	007°02'03.95"E

Bounary Coordinates

Location	Lat	Long
Back Left	047°24'13.45"N	007°01'49.03"E
Back Right	047°24'01.27"N	007°00'59.58"E
Front Left	047°23'39.99"N	007°02'07.02"E
Front Right	047°23'27.81"N	007°01'17.58"E
X Axis Heading	Form B	Form C
	70	250

Judges can be positioned anywhere along the blue line which runs

From	047°23'30.85"N	007°01'43.93"E
To	047°23'27.81"N	007°01'45.57"E

Close-in obstacles

Familiarize yourself with the terrain and close-in obstacles surrounding the airfield. Detailed information regarding the obstacles can be found on <http://map.aviation.admin.ch/>

